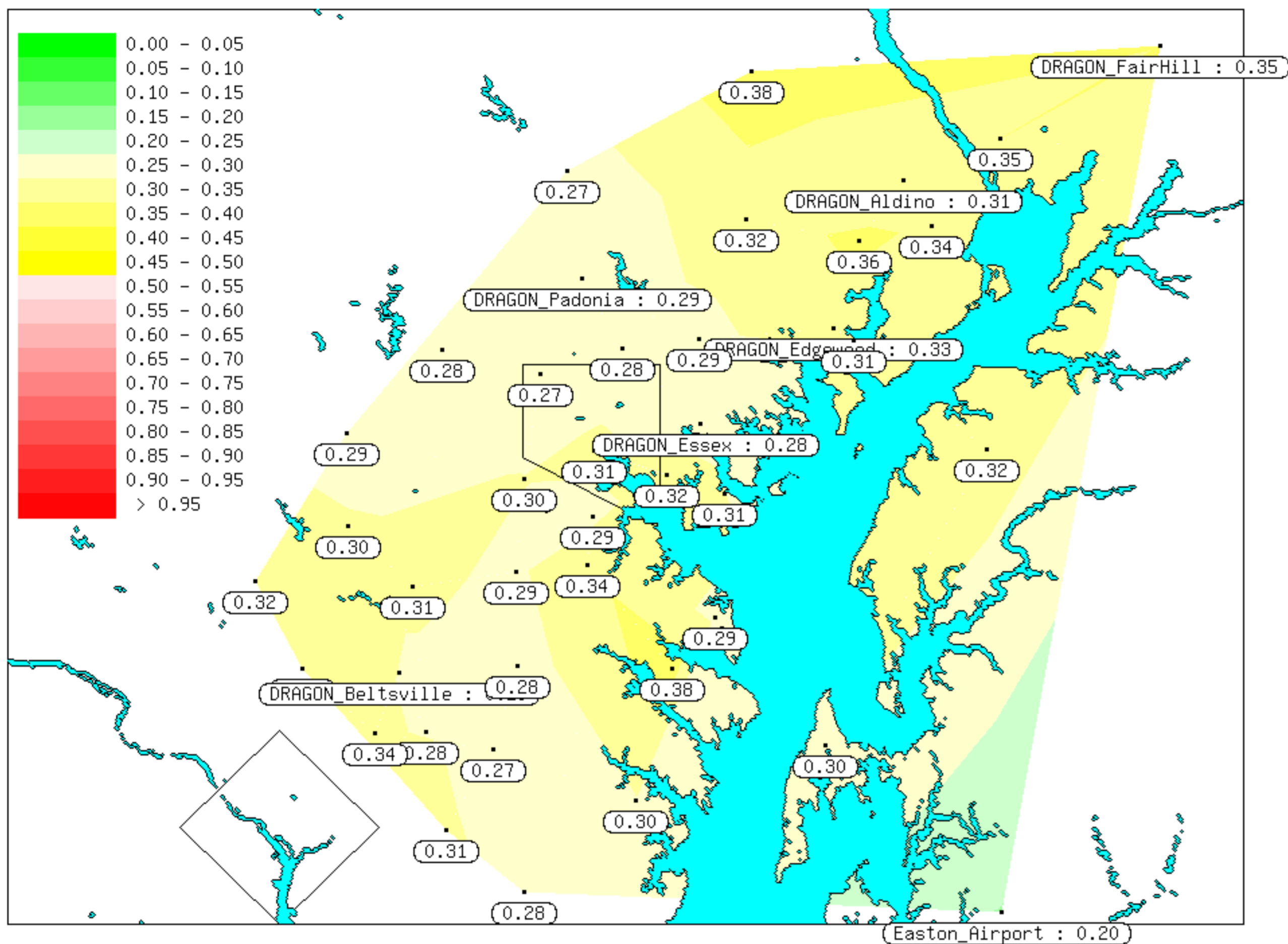


(N 39.7400, W 77.4000)

(N 39.7400, W 75.7500)



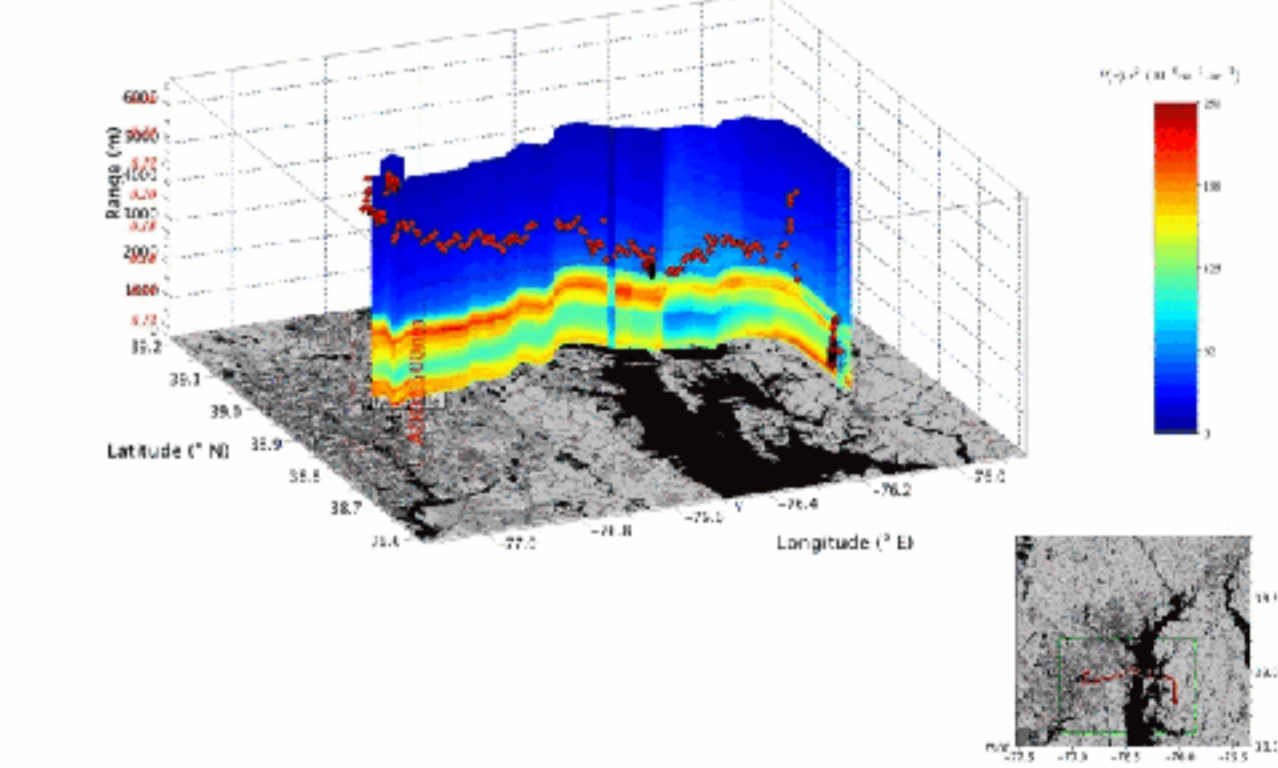
(N 38.7950, W 77.4000)

(N 38.7950, W 75.7500)

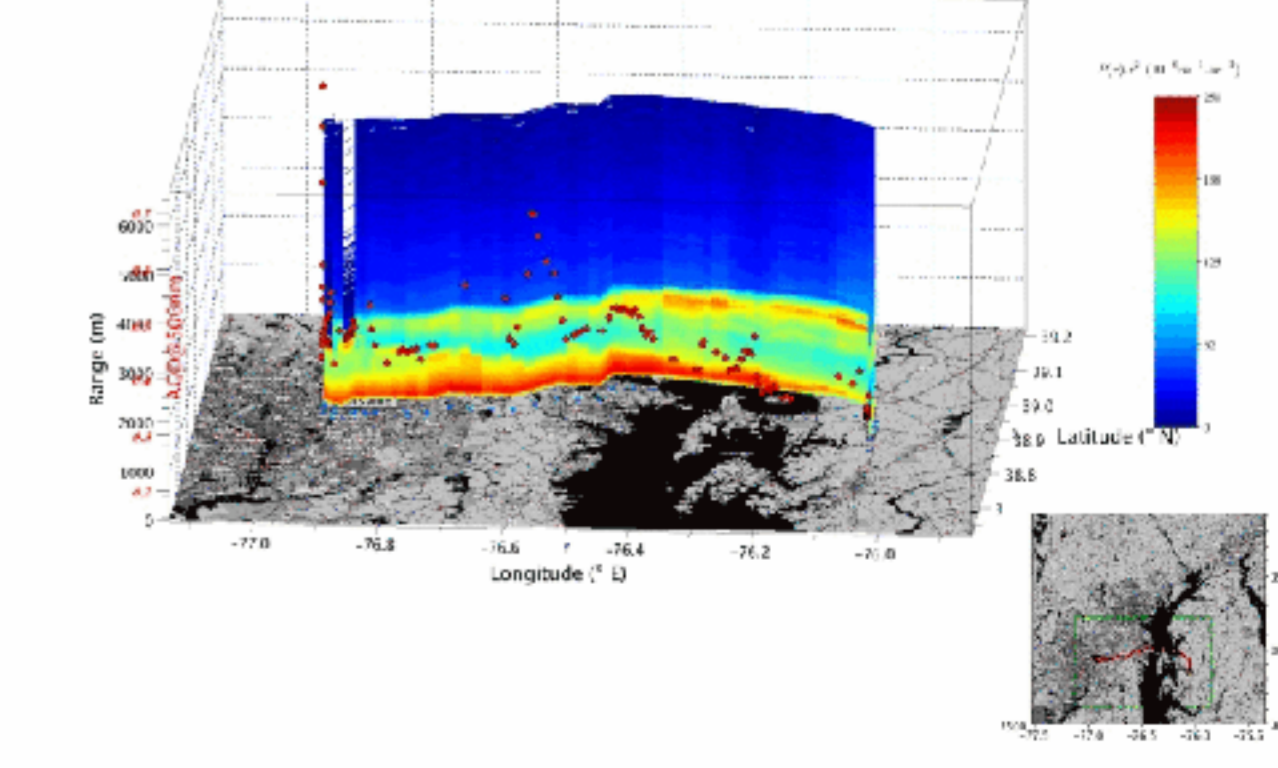
Profile Sites:

Site	Aot(500)	SDA(fine)	Water Vapor	Angstrom	SSA(440)	Reff
DRAGON_FairHill	0.35	0.28	3.2	1.68	0.959	0.169
DRAGON_Aldino	0.31	0.25	3.2	1.60	0.986	0.166
DRAGON_Edgewood	0.33	0.25	3.3	1.60	0.975	0.150
DRAGON_Padonia	0.29	0.27	3.2	1.74	0.955	0.158
DRAGON_Essex	0.28	0.25	3.1	1.86	0.956	0.151
DRAGON_Beltsville	0.29	0.28	3.6	1.96	0.983	0.143
Easton_Airport	0.20	0.14	2.8	1.37	N/A	0.153
DRAGON_WileyFord	0.53	0.39	2.9	1.24	0.992	0.160

Mobile Lidar & Sunphotometer - 07 18 2011 - 12h00 : 15h46 (UT)

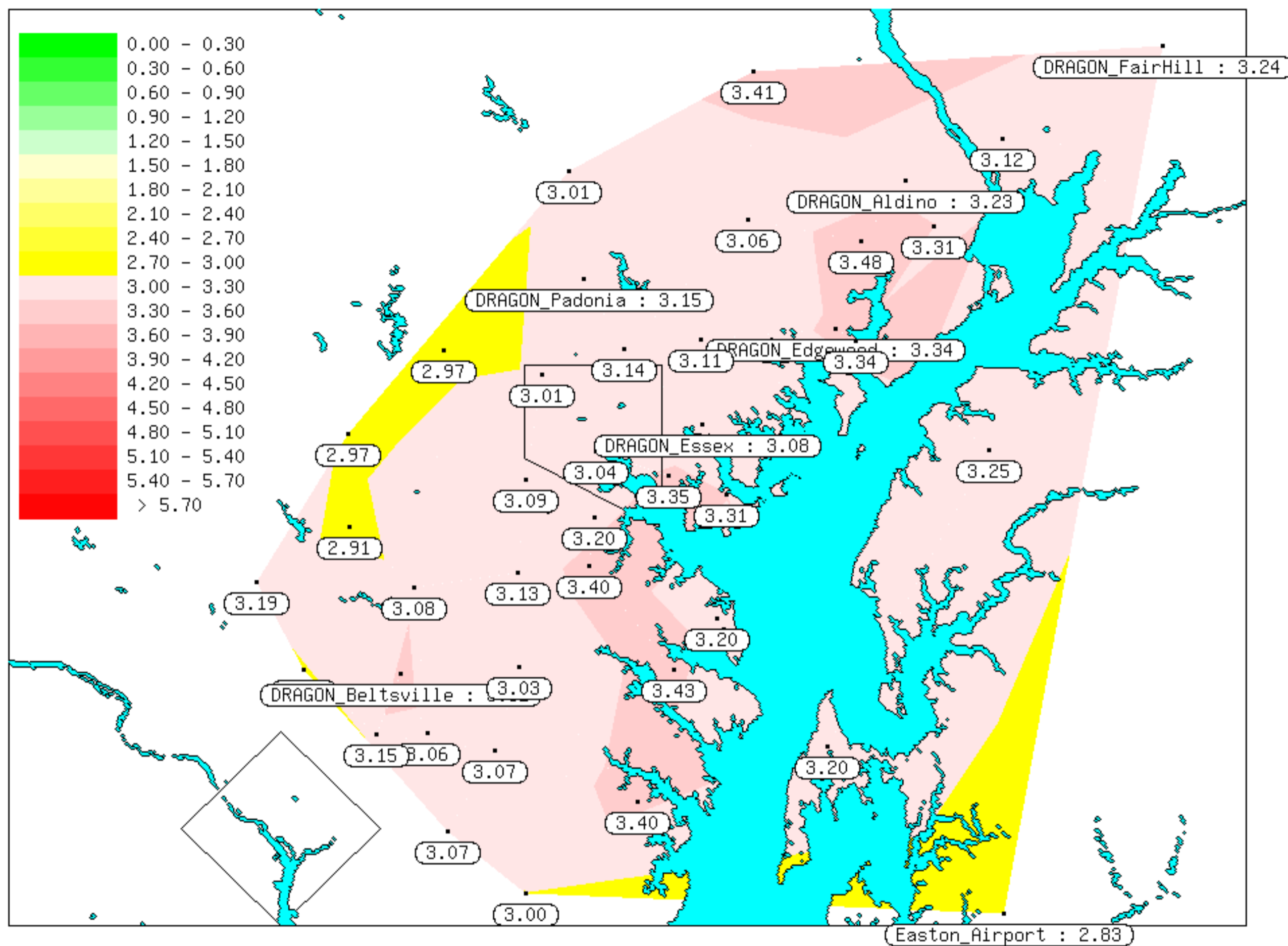


Mobile Lidar & Sunphotometer - 07 18 2011 - 15h56 : 17h51 (UT)



(N 39.7400, W 77.4000)

(N 39.7400, W 75.7500)



(N 38.7950, W 77.4000)

(N 38.7950, W 75.7500)

Profile Sites:

Site	Aot(500)	SDA(fine)	Water Vapor	Angstrom	SSA(440)	Reff
DRAGON_FairHill	0.35	0.28	3.2	1.68	0.959	0.169
DRAGON_Aldino	0.31	0.25	3.2	1.60	0.986	0.166
DRAGON_Edgewood	0.33	0.25	3.3	1.60	0.975	0.150
DRAGON_Padonia	0.29	0.27	3.2	1.74	0.955	0.158
DRAGON_Essex	0.28	0.25	3.1	1.86	0.956	0.151
DRAGON_Beltsville	0.29	0.28	3.6	1.96	0.983	0.143
Easton_Airport	0.20	0.14	2.8	1.37	N/A	0.153
DRAGON_WileyFord	0.53	0.39	2.9	1.24	0.992	0.160