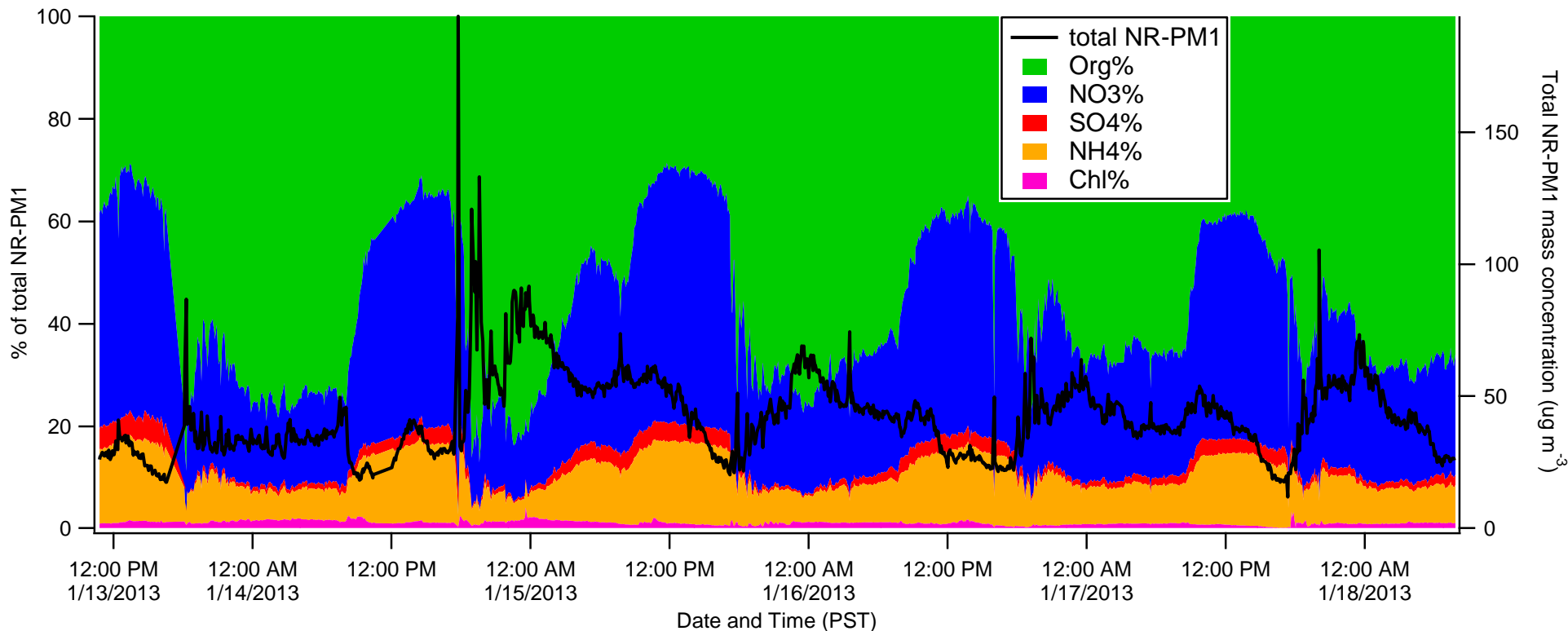


**Fresno Garland Site Aerosol Chemistry
and Size Distribution Data – Preliminary
results from HR-ToF-AMS, SPMS**

Hwajin Kim, Shan Zhou, Caroline
Parworth, Qi Zhang

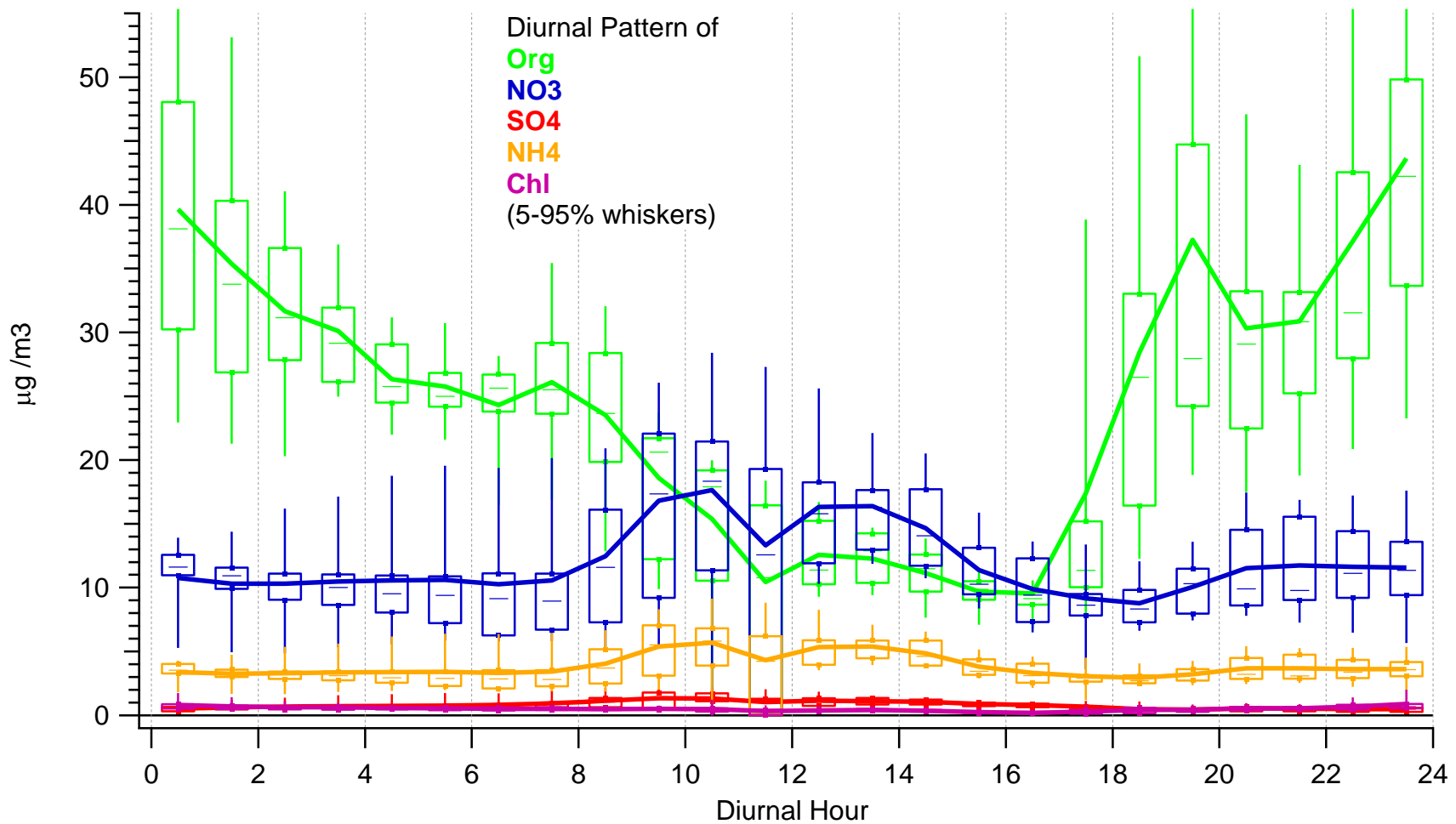
UC Davis

Temporal variations in submicron particle mass concentration and composition

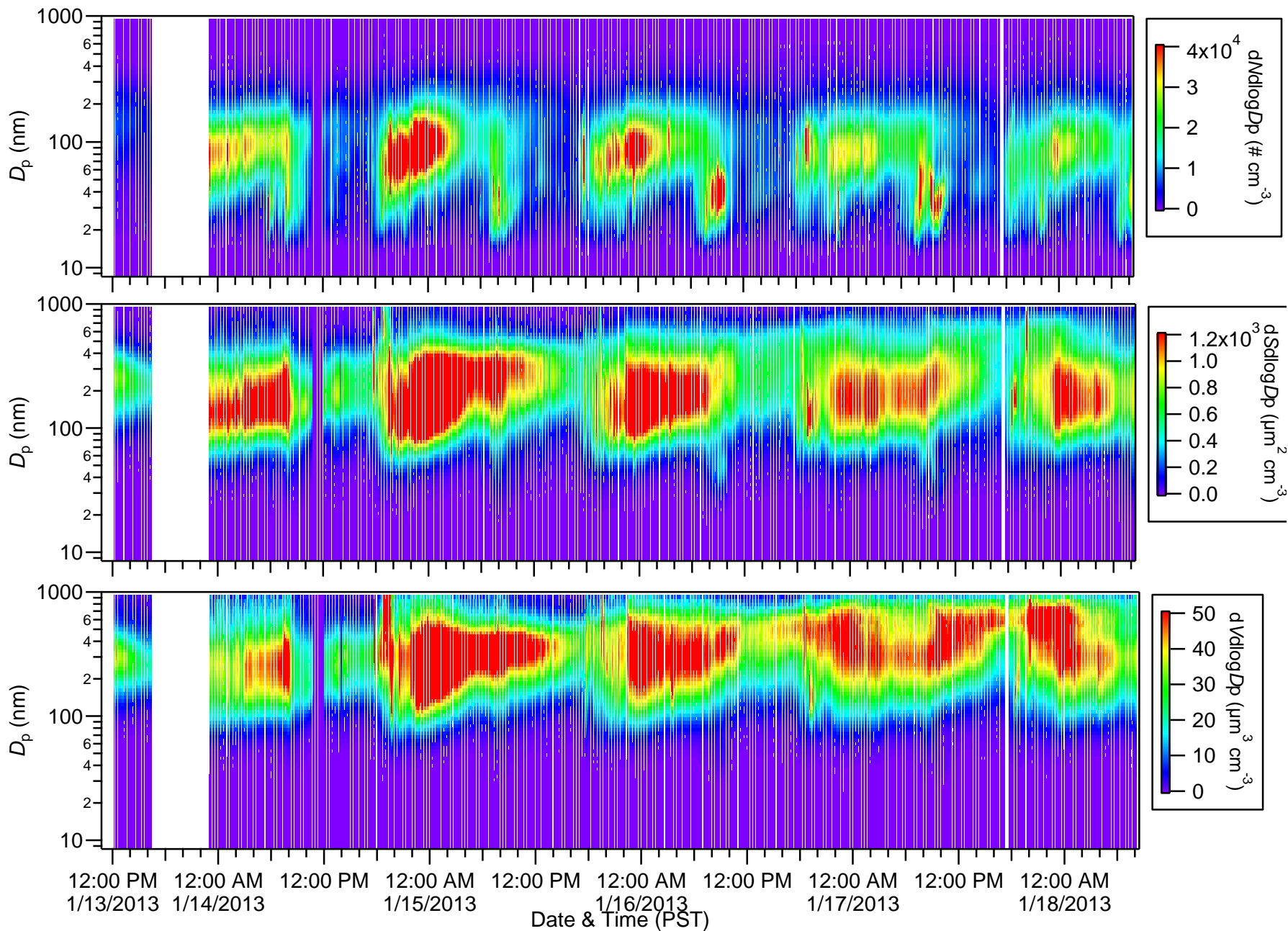


All species show strong diurnal patterns:

- Org elevated during night and early morning, mainly due to primary emissions – traffic and wood burning
- Secondary species, nitrate, sulfate, and oxygenated organics increased during the day



SMPS number, surface area, and volume size distribution time series



Based on AMS data, submicron particles appear to be
bulk neutralized

